

# Gretton Neighbourhood Plan

---

## Consultation Statement

---



## Contents

Introduction.....	3
Regulations and government guidance.....	5
Stage 1: Deciding to make a Neighbourhood Plan .....	5
Stage 2: Defining the neighbourhood .....	5
Stage 3: Preparing the plan .....	5
Communications.....	7
Local press: .....	7
Local radio: .....	8
Social media:.....	8
Parish Community Engagement: .....	8
Logo competition:.....	8
“Open Day” Events: .....	8
Consultation Survey.....	8
Stakeholder letters/email.....	8
Consultations .....	9
First Community Consultation .....	10
Second Community Consultation .....	11
Regulation 14 Consultation .....	11
Summary of Findings from Regulation 14 Consultation.....	11
Conclusion .....	12
Attachment 1 – Neighbourhood Plan Participants.....	13

## Introduction

This Consultation Statement has been prepared to fulfil the legal obligations of the Neighbourhood Planning Regulations 2012.

Section 15(2) of Part 5 of the Regulations sets out what a Consultation Statement should contain.

According to the Regulations, a Consultation Statement:

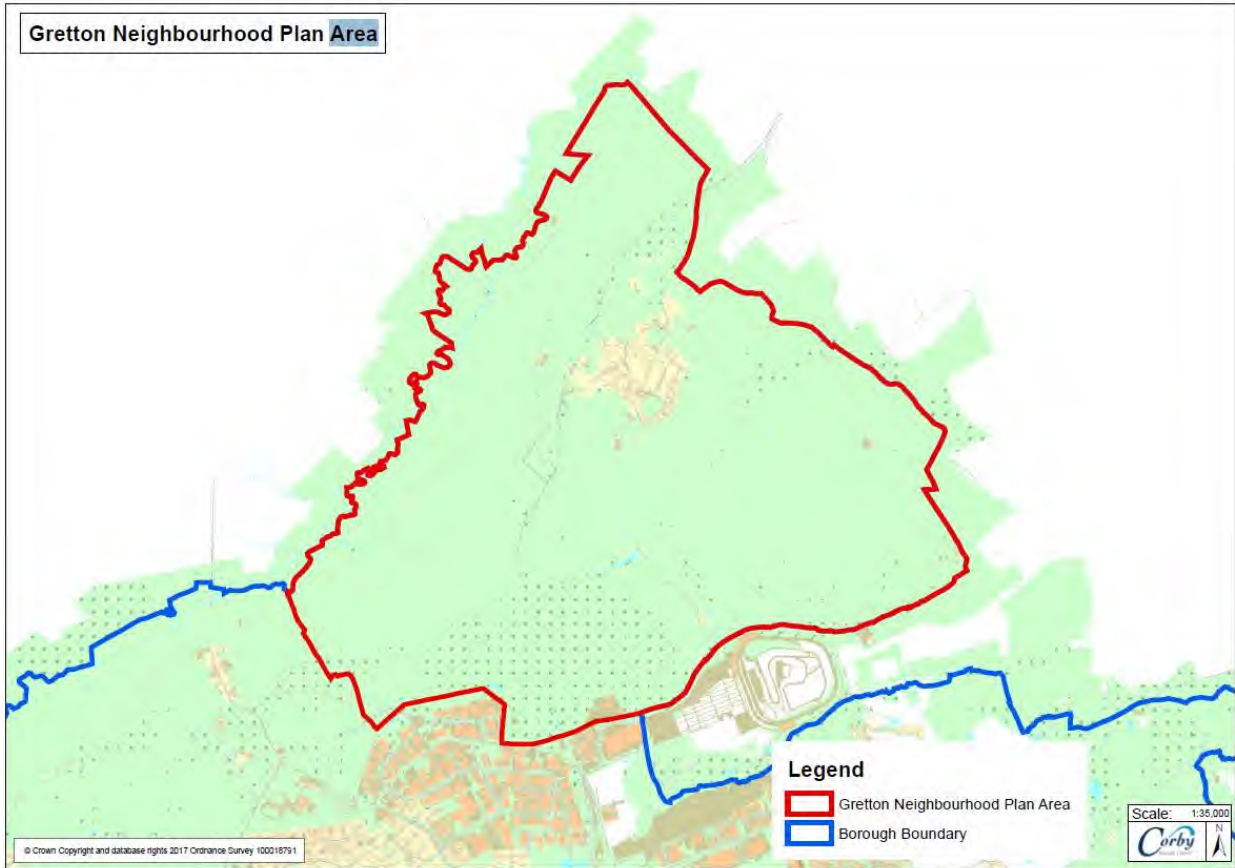
- Contains details of the persons and bodies who were consulted about the proposed Neighbourhood Development Plan;
- Explains how they were consulted;
- Summarises the main issues and concerns raised by the persons consulted;
- Describes how these issues and concerns have been considered and, where relevant, addressed in the proposed Neighbourhood Plan.

This document provides a record of the engagement that took place at the various stages of the plan's evolution; the main methods used to publicise the consultation and engagement process are documented, along with the main findings from the engagement.

The aims of the consultation process were to be inclusive and open in the preparation of the Gretton Neighbourhood Plan and to ensure that the wider community:

- was kept fully informed of what is being proposed
- was able to make their views known throughout the process
- had opportunities to be actively involved in shaping the emerging plan
- was made aware of how their views have informed the draft neighbourhood plan
- to "front load" the consultations to ensure that the Plan was fully informed by the views of residents, businesses and stakeholders
- to ensure consultation took place at all key stages, to engage as wide a cross-section of the community as possible and to ensure that the results of consultations were made publicly available.

Figure 1 – The Gretton Neighbourhood Plan Area



# Regulations and government guidance

## Stage 1: Deciding to make a Neighbourhood Plan

The Parish Council of Gretton formally took the decision to undertake a Neighbourhood Development Plan (Neighbourhood Plan) in March 2016. The residents were invited to volunteer to become members of a Steering Committee on behalf of the Parish Council.

## Stage 2: Defining the neighbourhood

Gretton Parish Council applied to the local planning authority, Corby Borough Council, to designate the neighbourhood as identified in Figure 1. In accordance with Regulation 6 of the Neighbourhood Planning (General) Regulations 2012 (as amended). Corby Borough Council carried out a formal six week consultation on the proposals from 16th September 2016 to 28th October 2016. This was approved on 2nd November 2016.

Corby Borough Council contacted statutory and local stakeholders and announce the commencement of the Neighbourhood Plan process. Consultation responses were received from the following bodies:

- Anglian Water
- Natural England
- Highways England
- Historic England
- Environment England
- Gladman Developments
- National Grid

Copies of correspondence are available on the Corby Borough Council website at <https://www.corby.gov.uk/home/planning-and-building-control/planning-policy/neighbourhood-planning>.

The statutory and other stakeholders were also consulted as part of the Regulation 14 consultation arrangements.

## Stage 3: Preparing the plan

The Gretton Neighbourhood Plan Steering Committee is a sub-committee of the Parish Council. Three Parish Councillors and twelve other residents originally agreed to serve

on the Committee. The Committee has an elected Chair and Council approved terms of reference and governance remit.

Gretton Neighbourhood Plan Steering Committee is a sub-committee of the Gretton Parish Council and has worked to produce a draft plan, ensuring that it is:

- Generally, in line with local and national planning policy framework;
- In line with other legal frameworks;
- Mindful of the need to contribute to sustainable development;
- Prepared based on sound governance arrangements.

The Gretton Neighbourhood Plan seeks to establish specific and local planning policies for the development and use of land in the Parish. The Neighbourhood Plan establishes a vision for the future considering the data gathered through community engagement and consultation alongside demographic and socio-economic data. Following a recruitment process Gretton Parish Council appointed YourLocale as consultants to help create the plan.

The Gretton Neighbourhood Plan Steering Committee met on the following dates (all meetings were open to members of the public):

<b>2017</b>	<b>2018</b>	<b>2019</b>
9th February 9th March 13th April 27th April 11th May 8th June 13th July 12th September (Extraordinary Meeting – Gary Kirk, YourLocale) 28th September 30th October 29th November	4th January 8th February 8th March 12th April 10th May 21st June 12th July 9th August 13th September 11th October 8th November	10th January 21st March 27th June 16th July 12th August (presentation to Gretton Parish Council) 19th September 29th September
<b>2020</b>		
16th January 23rd January 6th February		

The Minutes of Meetings of the Gretton Neighbourhood Plan Steering Committee can be found via the Gretton Parish Council web site <http://www.grettonparishcouncil.co.uk/community/gretton-parish-council-7885/neighbourhood-plan-meeting-minutes/>.

On 12th April 2018 three theme groups were launched. Local people were engaged to join and prioritise ideas emerging from the first consultations and start to work on their plans. Nineteen people were involved in the theme groups, undertaking valuable research and assessment.

- The Housing and Built Environment Theme Group met five times during 2018

18th April  
26th April  
24th May  
2nd July  
26th July

- The Environment Theme Group met six times during 2018

11th May  
1st June  
15th June (Walk around village)  
29th August  
10th October  
6th November

- The Community Sustainability Group met four times during 2018

30th April  
4th June  
2nd July  
5th September

## Communications

The Gretton Neighbourhood Plan team have been proactive in promoting the plan and associated activities. It has utilised a series of media options to engage with the parish community. These include:

### **Local press:**

Northamptonshire Telegraph – weekly newspaper

Stamford Mercury – weekly newspaper

Gretton News – parish magazine, a free quarterly magazine delivered to all parish households.

**Local radio:**

BBC Northamptonshire Radio

Corby Local Radio

**Social media:**

Facebook – Gretton Neighbourhood Plan, Gretton News and Views and Gretton Parish Council pages. The Gretton Neighbourhood Plan page was set up for informal interaction on the Neighbourhood Plan. Regular updates were posted to keep residents informed of progress on all three Facebook pages.

**Parish Community Engagement:**

The Parish Council were kept updated on the progress of the Steering Committee by a standing agenda item at the monthly Parish Council meetings.

**Logo competition:**

The children from Gretton primary school were invited to design a logo for the Gretton Neighbourhood Plan utilising their own ideas to represent what Gretton meant to them. The winning entry was selected following the public participation at the Open Event in March 2018 and can be seen on the front page of this document.

**“Open Day” Events:**

Two “Open Day” events were held at the Gretton Village Hall. These took place on 3rd March 2018 and 24th November 2018. Banners and posters were placed around the parish and on information notice boards in local pubs, the recreation centre, places of worship, the Village Hall, Lydia’s Café and the Cottage Salon. A flyer drop was made to every household in the village.

**Consultation Survey**

A Rural Housing Needs Survey was commissioned by Corby Borough Council in October 2017. Members of the Gretton Neighbourhood Plan Steering Committee and the Parish Council met with the consultants prior to the survey and it was agreed that one of the four pages of the survey would include a questionnaire for residents to give opinions on what subjects should be incorporated into the Gretton Neighbourhood Plan.

**Stakeholder letters/email**

A letter or email was sent to all Regulation 14 consultation bodies and stakeholders during October and November 2019, advising them that the Parish Council were producing a Neighbourhood Plan and inviting them to participate. For GDPR purposes the full list has not been published publicly but is available from the Secretary of the



Gretton Neighbourhood Plan Steering Committee.

## Consultations

“Open Day” events were held at Gretton Village Hall.

An initial community consultation event took place at the Village Hall on 3rd March 2018. The primary objectives of this event were:

- to help residents understand more about the Neighbourhood Planning framework;
- give feedback on the results of the Questionnaire undertaken in October 2017;
- Use interactive methods to better understand the main concerns, requirements or aims for a Neighbourhood Plan
- To offer residents the opportunity to become involved by joining a Theme Group of their choosing.

A second “Open Day” event was held at the same location in November 2018. The aim of this consultation was to present the emerging policies and to offer residents an opportunity to become involved by joining a Theme Group of their choosing.

Regulation 14 consultation took place from 1st October 2019 for a period of six weeks until 12th November 2019. For GDPR reasons the list of stakeholders has not been made public. The full list is held by the Secretary of the Gretton Neighbourhood Plan Committee.

## First Community Consultation

An open consultation event took place at the Gretton Village Hall on 3rd March 2018. The results from Neighbourhood Plan questionnaire included in the Rural Housing Needs Survey were shared with the community. A word cloud summarising the feedback from the survey is below:



The views expressed by the residents were used to shape the strategy in preparing the Plan for Gretton. Over 270 people attended and offered their views.

The appointed consultants, YourLocale, commented on the remarkable turnout which was easily four times that anticipated. The feedback from residents, both at the time of the event and afterwards was extremely positive. Feedback given was that people found the displays interesting and informative and felt they were better educated about the Neighbourhood Plan and what it means. After the event, people unable to attend sought more information and details of further events.

### **Second Community Consultation**

A further Open Event took place on 24th November 2018 at which over 153 people were in attendance and the emerging policies were put to the community.

There was overwhelming support for the policies on display. There was good interaction and discussions with those visiting the event.

### **Regulation 14 Consultation**

This consultation took place between 1st October 2019 and 12th November 2019. The responses. The Neighbourhood Plan was made available electronically on the Gretton Parish Council website and hard copies of the plan were located within the village at St. James' Church, Lydia's Coffee Shop, the Village Hall and the Cottage Salon. Comment forms were made available with the Neighbourhood Plan with instructions on where to send replies.

### **Summary of Findings from Regulation 14 Consultation**

The consultation elicited 17 representations, five from the statutory stakeholders, 11 from the residents and one from the landowners/agents. The subjects included:

- Transport and Road Safety;
- Community and Sustainability;
- History;
- Natural Environment;
- Housing and Built Environment;
- Residential Site Allocation;
- Limits to Development.



Gretton NP  
Regulation 14 Respor

The responses were reviewed at three Steering Committee meetings held on 16th January, 23rd January and 6 February 2020. The list of decisions was presented to Gretton Parish Council for review. At the Parish Council Meeting on 9th March 2020, the Gretton Parish Council unanimously supported the decisions made and this is notated in the minutes of that meeting.



Gretton PC Minutes  
9th March 2020

## Conclusion

Comments from Corby Borough Council Planning Officers in relation to the draft Neighbourhood Plan have helped to shape the pre-submission version.

The draft Neighbourhood Plan is now ready to be submitted for Regulation 16 consultation to Corby Borough Council, who will publicise it for a further six weeks and then forward it, with accompanying documents and all representations made during the publicity period, to an Independent Examiner who will review it and check that it meets the 'Basic Conditions'. If the Plan successfully passes this stage, with any modifications, it will be put forward for referendum.

The referendum question will be a straight "yes" or "no" on the entire Plan, as set out by Neighbourhood Planning Regulations. People will not be able to vote for or against individual policies. If 50% or more of those voting vote for the Plan, it will be brought into force ('Made') and become part of District-wide planning policy.

This Statement of Consultation and the supporting Attachments and Documents are provided to comply with Section 15(2) of part 5 of the 2012 Neighbourhood Planning Regulations.

## Attachment 1 – Neighbourhood Plan Participants

The Gretton Neighbourhood Planning Steering Committee is a Committee of the Parish Council. The long-term serving members are listed below:

Rob Collis	Rob Newby
Sara Earl	Andrew Royle (Parish Council Chair until 2019)
Steve Gray	Frances Woolston (Parish Councillor and Parish Council Chair from 2019)
Susan Husk	Steven Wright
Jacki Lilley (Chair)	Kevin Watt (Borough Councillor)
Peter Lilley	
Gary Kirk MA, CQSW, MCIH (YourLocale MD)	

Other members who served on the Gretton Neighbourhood Planning Steering Committee for part of the meeting cycle or joined at later stage are listed below:

Jane Collis	John Leslie
Susan Forsey	Jeff Sharnock
Tim Fox (Parish Councillor)	

Three theme groups: 1. Housing and Build Environment, 2. Natural and Historic Environment and 3. Community Sustainability were established in support of the GNPSC. Initially, two parish councillors, three consultants and 19 volunteer residents agreed to serve on the groups. The long term serving members are listed below:

1. Housing and Build Environment	2. Natural and Historic Environment
Derek Doran (BSc (Hons), MCIH, MBA (YourLocale))	Susan Forsey
Charlie Gamble	Ian Halcrow
Jerry Lunt	Helen Heywood
Stuart Rochester	Peter Lilley
Andrew Royle	John Martin (YourLocale) AMA, BSc (Hons)
Rachel Stevens	Rob Newby
Steven Wright	Frances Woolston

### 3. Community Sustainability Group

Jane Collis

Sara Earl

Susan Forsey

Steve Gray

Blair Long

Gill Long

Alison Merricks

Debs Mulligan

Rob Newby

Mike Preston BSc (Hons) (YourLocale)

=====